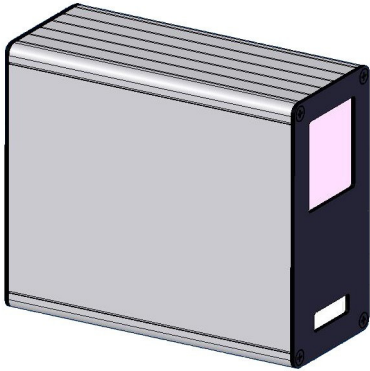


## PROCAM TECHNICAL SPECIFICATIONS

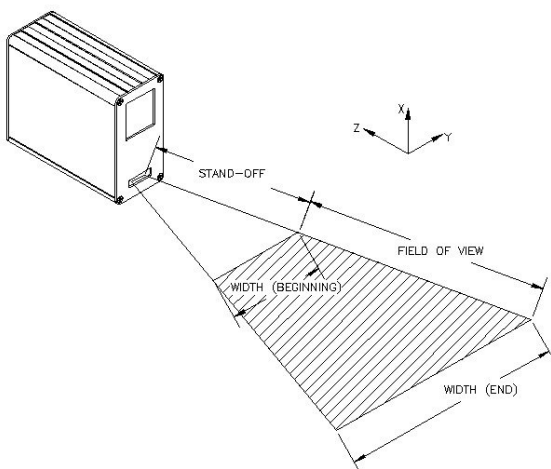


- **3D MULTI-PURPOSE LASER SENSOR**
- **3D SOFTWARE INCLUDED**
- **DLL INTERFACING CAPABILITIES**
- **VERY LOW-COST, HIGHLY RELIABLE**
- **USB CONNECTIVITY FOR DATA AND POWER**

The new PROCAM 3D laser camera offers all the necessary features for either process control in a factory production or 3d digitizing of objects for reverse engineering.

The Procam uses its USB connection for both data transmission to the computer and power. No need for any other power cable. An easy-to-use interface enables the user to control all the camera parameters and comes with extensive measuring tools. It also provides 3D scanning capabilities with different data format saving possibilities (STL, DXF, etc...) in order to use the data with other CAD software.

Furthermore, the PROCAM camera and RDP3D software enables experienced programmers to make their own interfaces using RDP Technologies DLL files for a more specific use on your already existing application.



CHARACTERISTICS	
Dimensions	4.85''x2.08''x4.05''(123,3x52,8x102,9mm)
Weight	.73 lbs (0,33 kg)
Stand-off	4.00''(101,6 mm)
Field of View	39.4''(1000mm)
Width (begin)	4.00''(101,6mm)
Width (end)	36''(914,4mm)
Resolution (Z)	.01''(0,2mm)
Resolution (Y)	.006 - .06''(0,16 - 1,4mm)
Scan rate	30 frames per second
Pixel/profile	640 calibrated points
Laser Power	5 mW (class 3R)
Port and Power	USB 2.0

## RDP3D SOFTWARE SPECIFICATIONS

The RDP3D application is a program that enables the user to control the PROCAM camera, provides real-time measuring tools and 3D acquisition capabilities. This application also makes it possible to save in file formats compatible with different CAD software such as AutoCAD, SolidWorks or 3dsMax.

The RDP3D software is designed as a user-friendly interface enabling you to execute measurements for your applications (see figure 1). The interface enables users to have complete control over the PROCAM camera by letting them choose between an Automatic Gain Control (AGC) or a manual control.

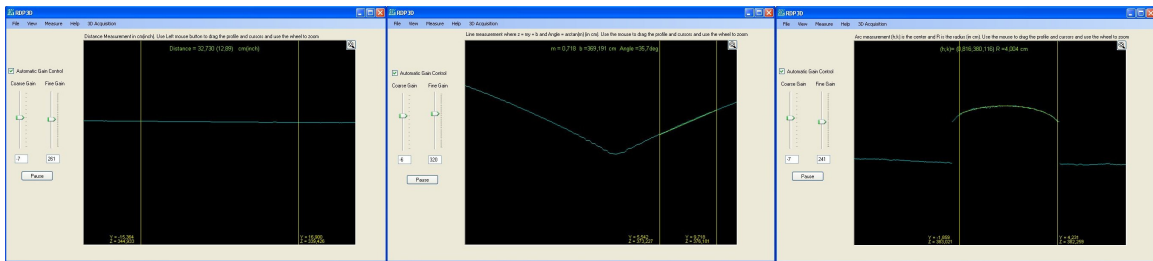
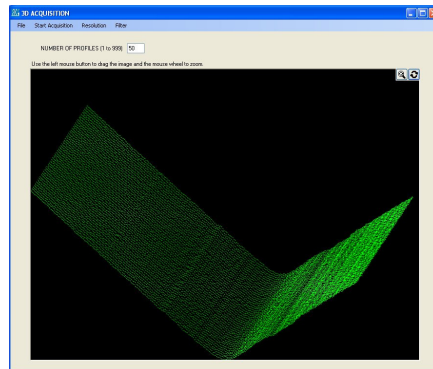


Figure 1: RDP3D measuring capabilities (Distance, Line and Circle)

The RDP3D software can also be used to generate 3D objects by simply scanning them. A series of features enables the user to rotate, zoom and filter the 3D image and then save it in different formats including STL and DXF for use in other CAD software.



Finally, The RDP3D software has been designed to offer programming flexibility thru the use of DLL files which allow users to incorporate all the camera controls in their own software application.

**Contact RDP Technologies for more information at [sales@rdptechnologies.ca](mailto:sales@rdptechnologies.ca).**